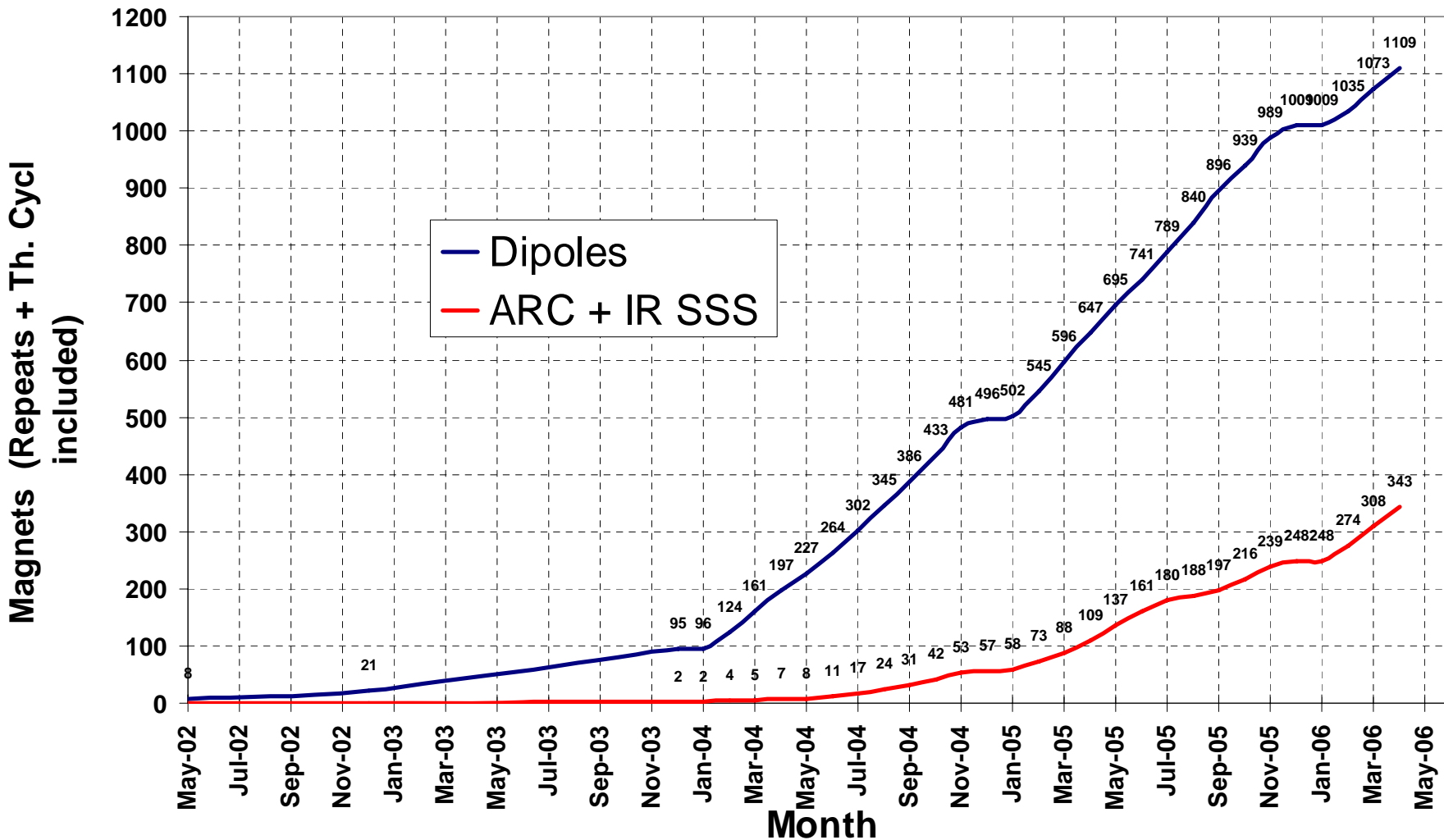


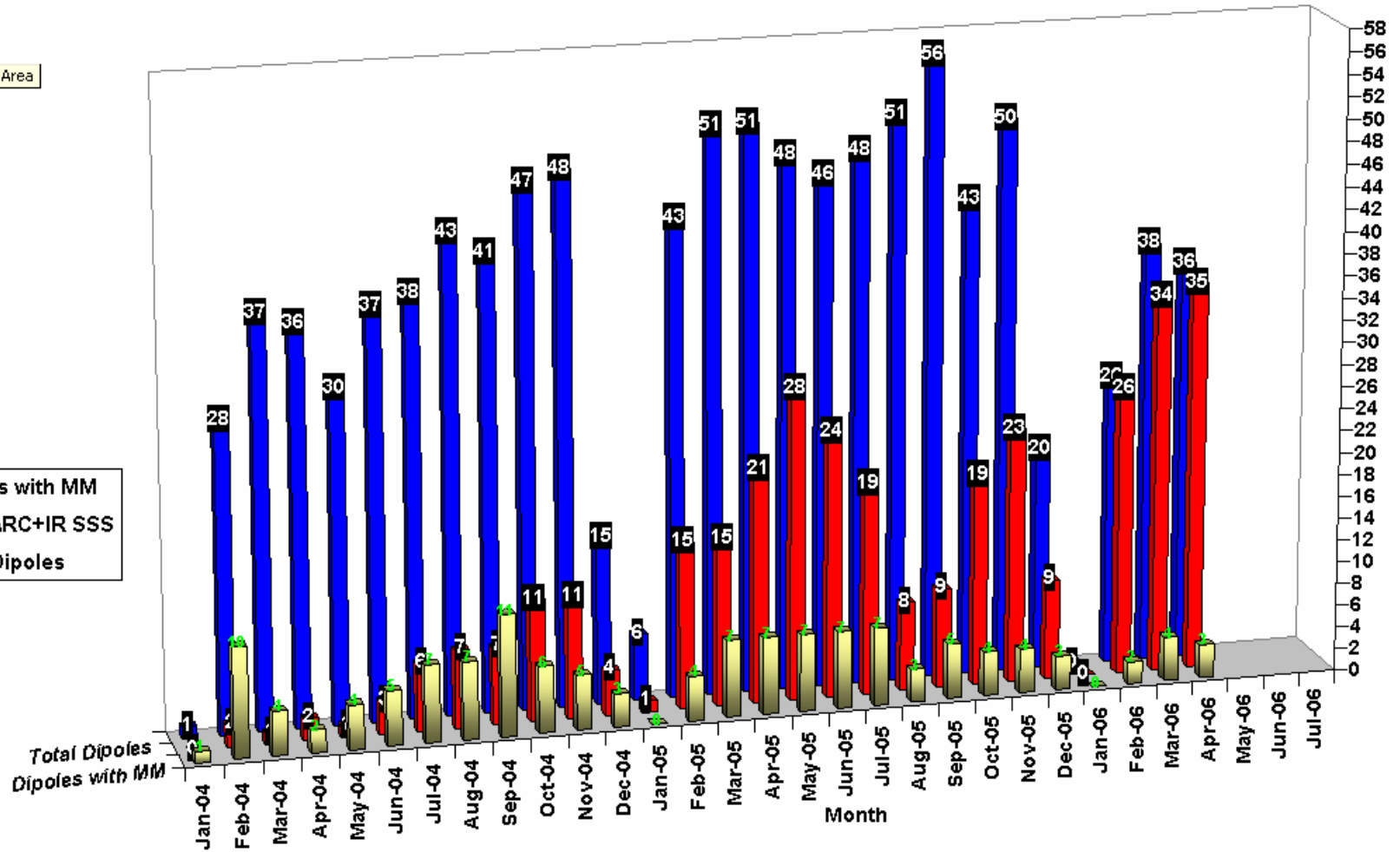
Statistics For end Apr.06

Cumulative Cold Tested Magnets



Cold tested SSS, DIPOLES & DIPOLES with Magnetic M'ment

Number Tested



Statistics For end Apr. 2006

Statistics																
Period	Dipoles tested (Reqd. Number = 1232)						ARC-SSS tested (Reqd. Number = 360)						IR-SSS (Reqd. Number = 114)			
	Fresh	Repeat	Total	MM	% Repeat	% MM	Fresh	Repeat	Total	MM	% Repeat	% MM	Fresh	Repeat	Total	% Repeat
Year 2002-2003	95	0	95	95	0.00	100.00	2	0	2	0	0.00	0.00	0	0	0	0.00
Year 2004	356	45	401	65	11.22	16.21	49	3	52	9	5.77	17.31	3	0	3	0.00
Year 2005	468	45	513	58	8.77	11.31	149	17	166	7	10.24	4.22	20	5	25	20.00
Year 2006	86	14	100	9	14.00	9.00	66	5	71	1	7.04	1.41	21	3	24	12.50
Year 2007	0	0	0	0	0.00	0.00	0	0	0	0	0.00	0.00	0	0	0	0.00
Total	1005	104	1109	227	9.38	20.47	266	25	291	17	8.59	5.84	44	8	52	15.38

1232 + 392 + 82 = 1706 Magnets needing Cold Tests in SM18

Overall LHC Statistics			
Total Fresh Magnets Tested	1315	Total Magnets expected to be Tested due to repeats (approx)	1877
Total Repeat Magnets Tested	137	(1706 + 11 % Repeats)	
Total Magnets Tested	1452	Balance Magnets (-)	425
Total % Retested	9.44	Tests Rate per month required to complete by Dec 2006	53.1

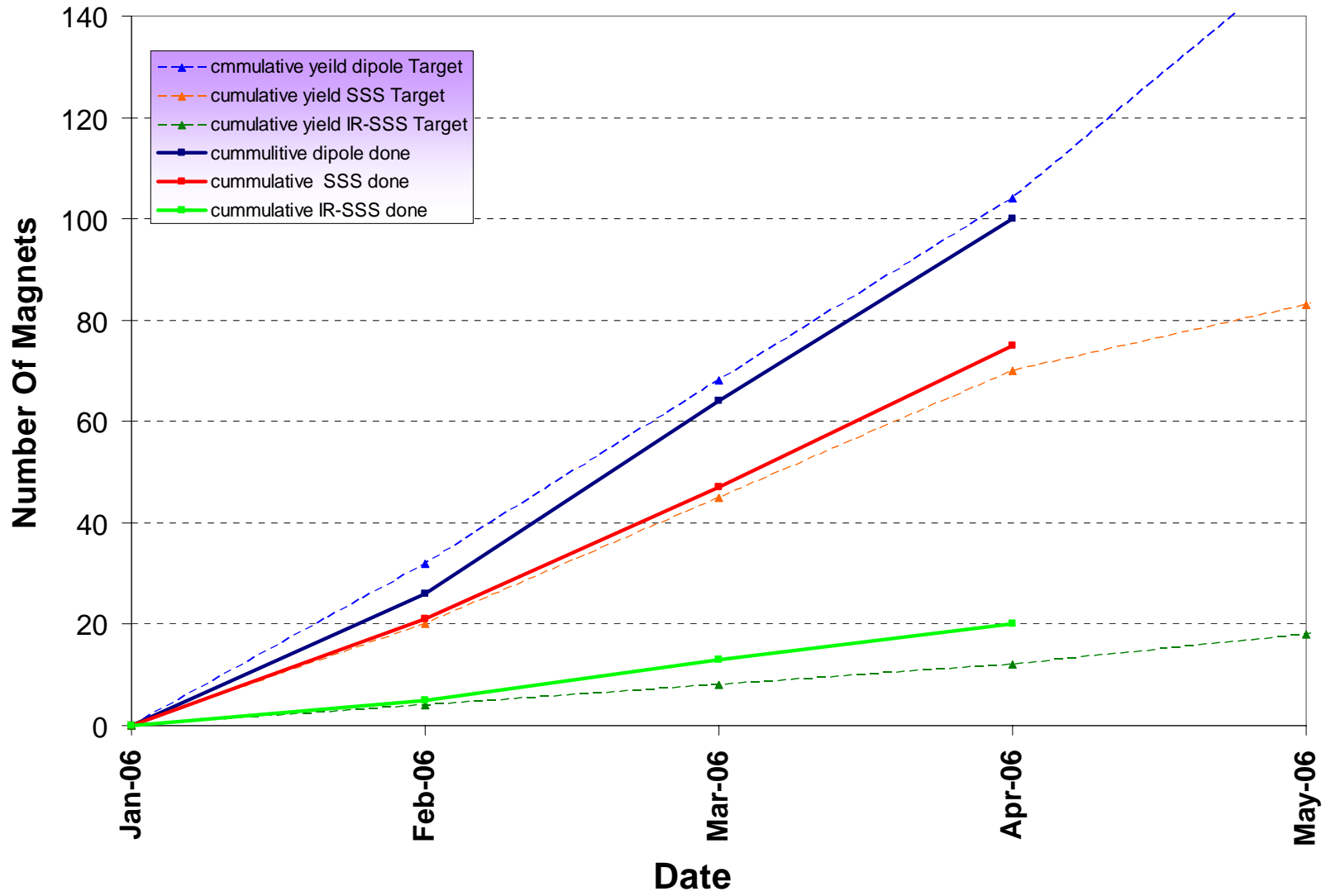
Prediction on 06-May 06 For Termination by end 2006 : Desired Magnets & Desired Bench Configurations

Assumption : Testing Time (Upto May 05) : Dipole -131 hrs,SSS- 143 hrs, After Jul-05, Dipole - 120 Hrs, ARC\$\$\$ - 115 Hrs, IR \$\$\$ - 10 days

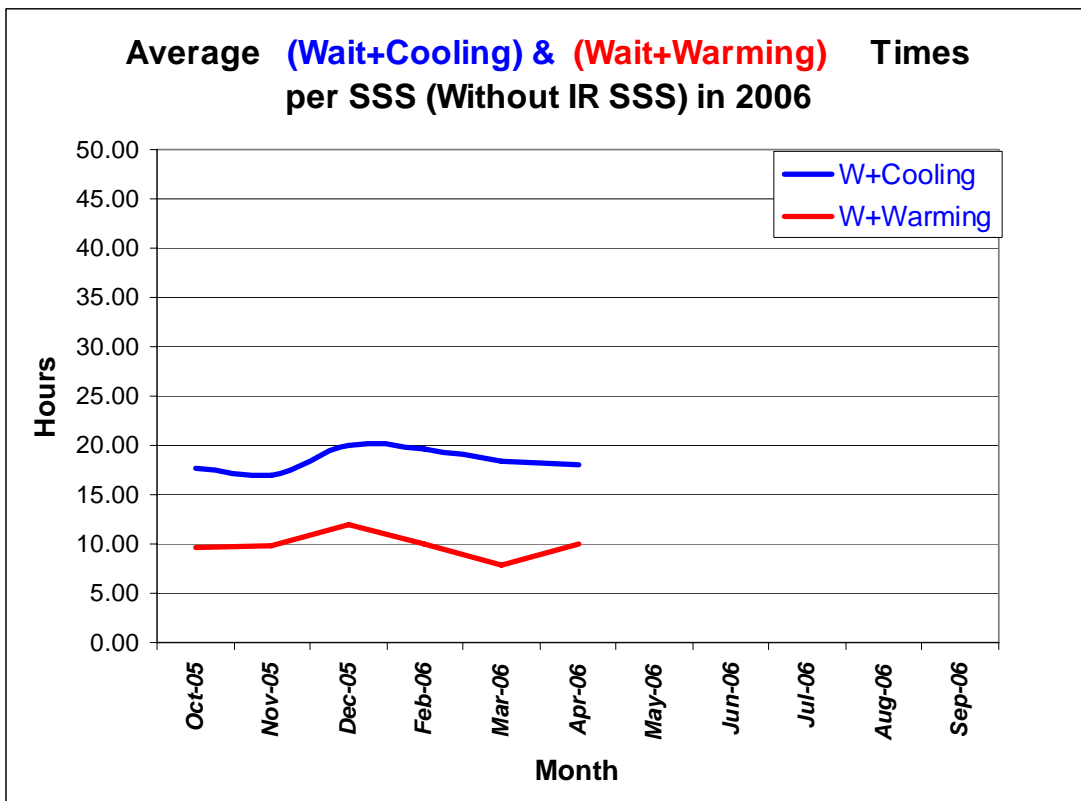
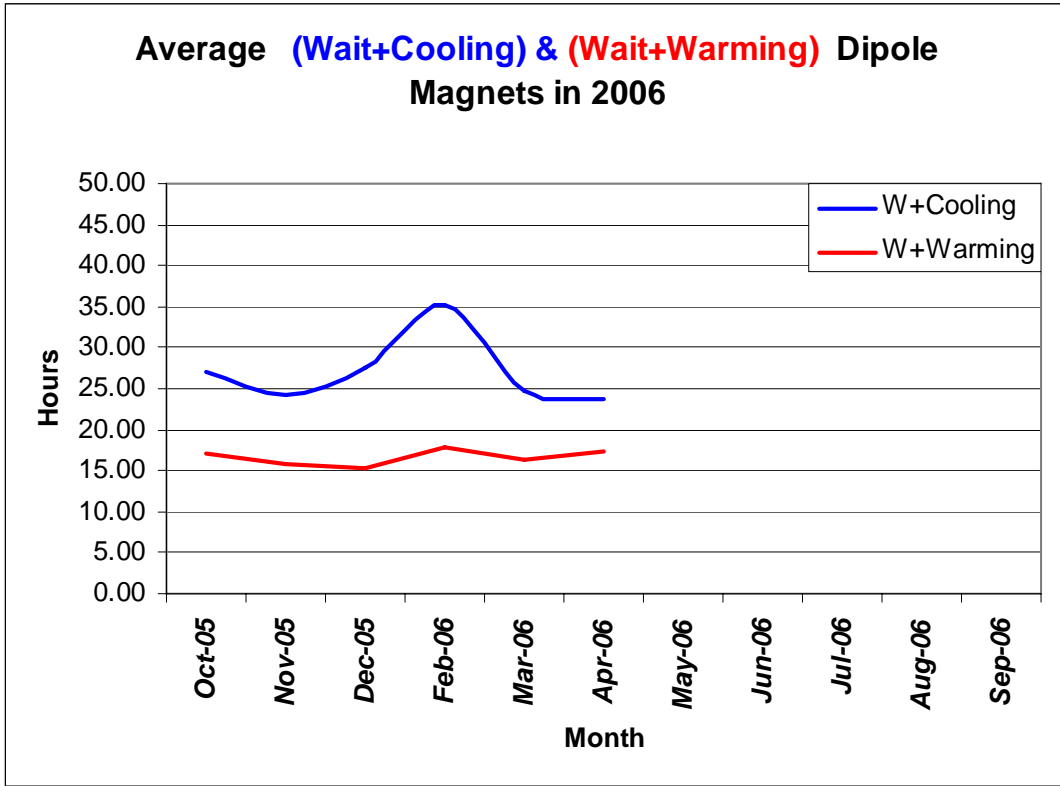
Date	Magnets per Month Dipoles	Magnets per Month ARC \$\$\$ + 500 series	Magnets per Month IR \$\$\$	Cumulative Dipoles	Cumulative ARC \$\$\$	Cumulative IR \$\$\$	Cumulative Total	Magnets per Month	Configuration
Jan-05	6	1	0	502	55	3	560	7	D-9/AS-2/IS-1
Feb-05	43	13	2	545	68	5	618	58	
Mar-05	51	13	2	596	81	7	684	66	
Apr-05	51	21	0	647	102	7	756	72	D-8/AS-4
May-05	48	27	1	695	129	8	832	76	D-8/AS-3/IS-1
Jun-05	46	21	3	741	150	11	902	70	
Jul-05	48	15	4	789	165	15	969	67	D-8/AS-2/IS-1
Aug-05	51	6	2	840	171	17	1028	59	Fatigue Tests; ConCrgo; D9/AS-1/IS-1
Sep-05	56	7	2	896	178	19	1093	65	D-10/AS-1/IS-1(to ~ 15Sept) D-8/AS-3/IS-1
Oct-05	43	13	6	939	191	25	1155	62	D-7/AS-2/IS-2 (E2-crgo)
Nov-05	50	21	2	989	212	27	1228	73	D-8/AS-3/IS-1
Dec-05	20	8	1	1009	220	28	1257	29	D-8/AS-3/IS-1
Jan-06	0	0	0	1009	220	28	1257	0	ANNUAL SHUTDOWN
Feb-06	26	21	5	1035	241	33	1309	52	D-6/AS-4/IS-2
Mar-06	38	26	8	1073	267	41	1381	72	D-6/AS-3/IS-3
Apr-06	36	28	7	1109	295	48	1452	71	D-6/AS-3/IS-3
May-06	48	13	6	1157	308	54	1519	67	D-8/AS-2/IS-2
Jun-06	36	19	6	1193	327	60	1580	61	D-6/AS-3/IS-3
Jul-06	36	19	6	1229	346	66	1641	61	
Aug-06	36	19	6	1265	365	72	1702	61	
Sep-06	36	19	7	1301	384	79	1764	62	
Oct-06	36	19	7	1337	403	86	1826	62	
Nov-06	36	19	5	1373	422	91	1886	60	
Dec-06	1	13	4	1374	435	95	1904	18	
Jan-07				1374	435	95	1904	0	SPARE MAGNET TESTS +
Feb-07				1374	435	95	1904	0	REMAINING IR \$\$\$
Mar-07				1374	435	95	1904	0	
Apr-07				1374	435	95	1904	0	
May-07				1374	435	95	1904	0	

Basic Targets	1232.0	392.0	82.0	114 (IR \$\$\$)= 50 (MS) + 32 (DS) + 32 (DS-MQ Type)					
Re-Tested(+ ~11.5%)	141.7	43.1	13.1						
Probable Target (+11.5%, +11%, +16%)	1373.7	435.1	95.1	Bench Throughput Estimator					
Total Magnets	1903.3			Dipoles		ARC-\$\$\$			
				8-Benches	48.0	3-Benches	18.8		
				7-Benches	42.0	4-Benches	25.0		
				6-Benches	36.0	6-Benches	37.6		
				3-Benches	54.0	2-Benches	12.5		

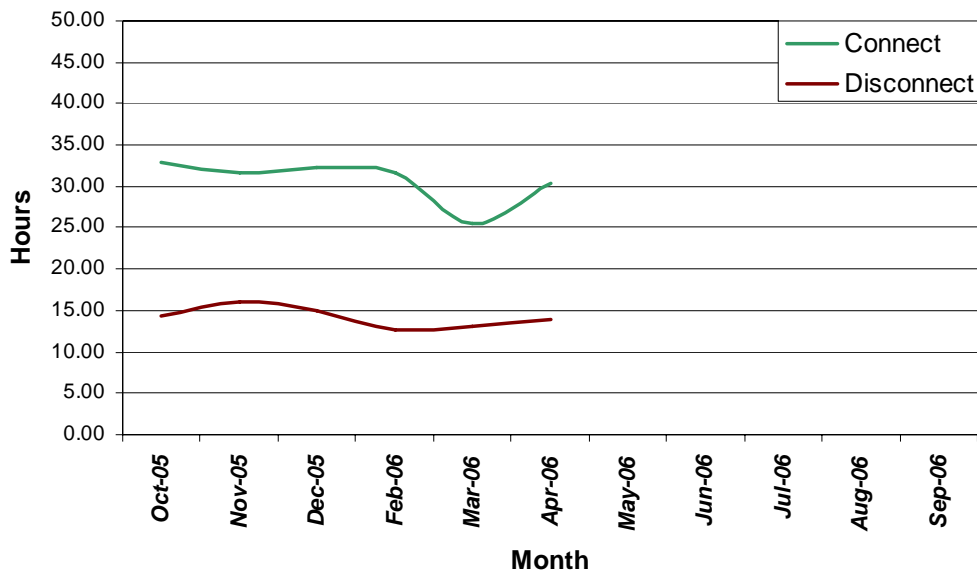
Target and current status of Magnet testing (assuming no cryo shutdown in Dec 06)



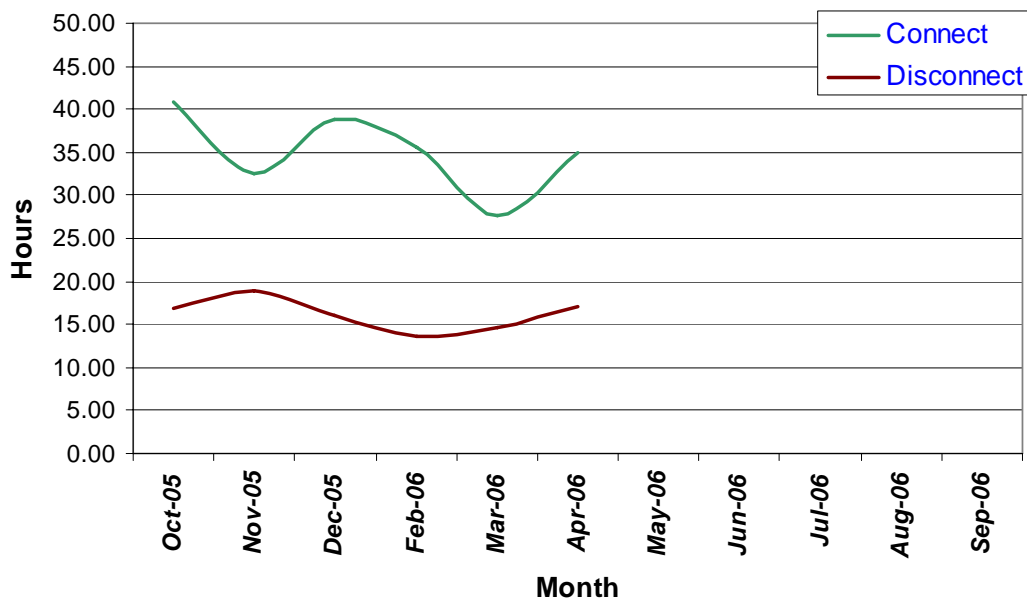
CRYO TIMES



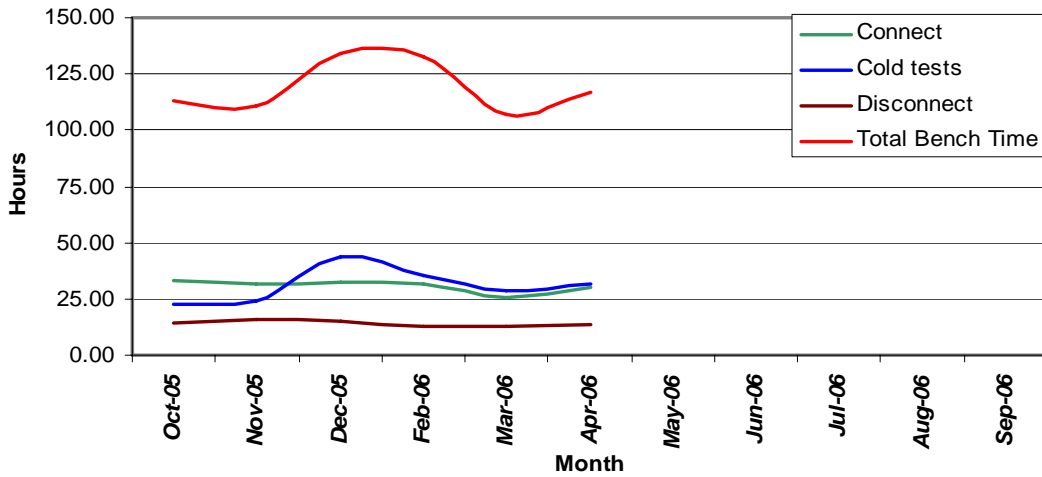
Average **Connection** & **Disconnection** Time per Dipole in 2006



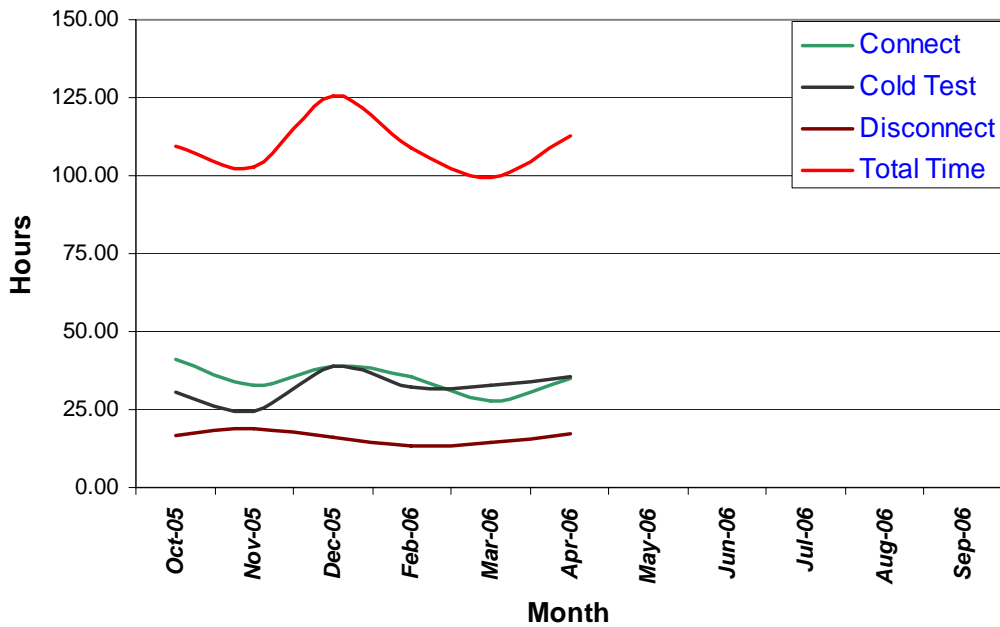
Average **Connection** & **Disconnection** time per SSS (Without IR SSS) in 2006



Average **Connect**, **Cold Tests**, **Disconnection** & **Total Time** per Dipole in 2006

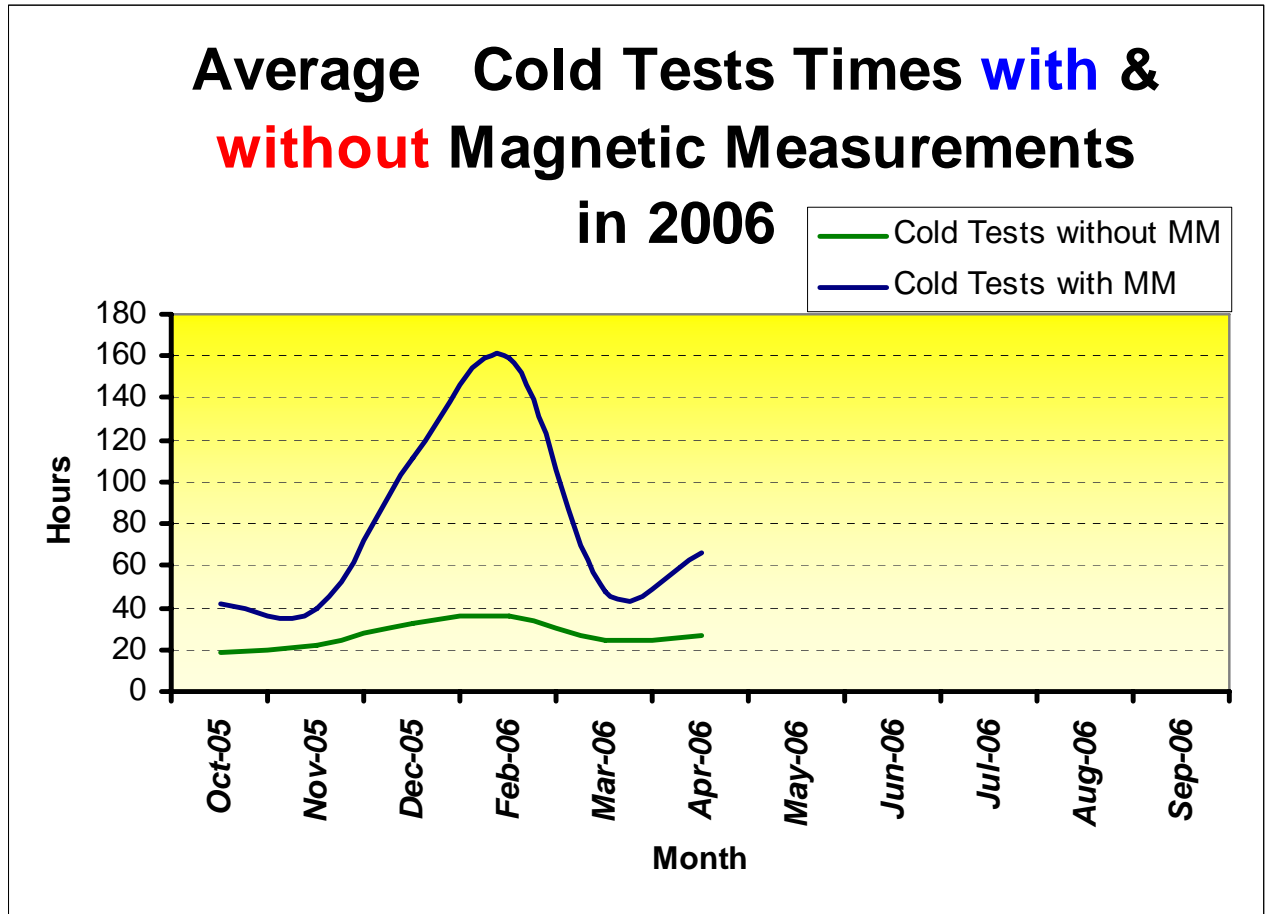


Average **Connect**, **Cold Test**, **Disconnect** & **Total Time** per SSS (Without IR SSS) in 2006



MAGNETIC MEASUREMENT TIMES

Average Cold Tests Times **with** & **without** Magnetic Measurements in 2006



Percentage of Magnets Tested And Remaining Till End Apr 06

